

MEDICOTTURE

FALL EDITION 2023





Fall 2023 COLLECTIONS

Insight Collection 4

Touch Collection 8

Peaches Collection 16

Layers 22

Maternity + ONE 24

Printed Collection 26

RothWear 28

Med Couture Matrix 36

Marketing Materials 42

#Scrublife



Insight For Women
 Not on Amazon
 MAP=Key + \$5
 No MAP Holidays

STYLE 2702
 ZIPPER POCKET
 PANT
 • Adjustable front
 waist ties
 • Two zipper pockets
 at the hip
 • Two cargo pockets
 • Straight leg with
 side vents
 R: XXS-5X (30 1/2")
 P: XS-2X (28 1/2")
 T: XS-XL (33")
 Shown in Wine



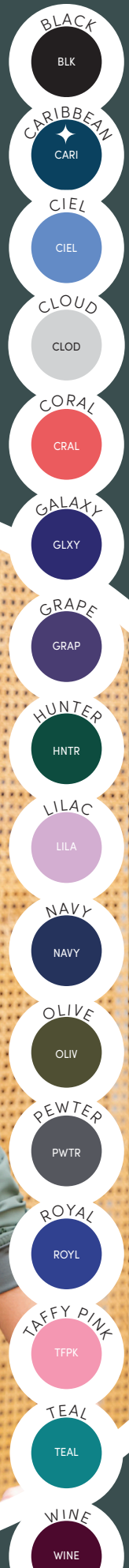
STYLE 2411
 3 POCKET TOP
 • V-neck
 • Three patch pockets
 • Front shoulder yokes
 R: XXS-5X (27")
 Shown in Navy



STYLE 2660
 INSIGHT FRONT
 POCKET WARM UP
 • Lightweight design
 • Full zip front
 • 2 patch pockets
 • 1-pen pocket
 R: XS-5X (26")
 Shown in Olive
 *Not available in
 Caribbean, Coral,
 Lilac or Taffy Pink.

NEW COLORS | AVAILABLE 08/2023

INSIGHT FABRIC :
 Super Soft + Stretch + Moisture Wicking
 + 100% polyester





STYLE 2468
SIDE POCKET TOP
 • V-neck
 • Shaped shoulder seams
 • Two patch pockets
 • Two side pockets
 R: XS-3X (27")
 Shown in Olive

- BLACK
BLK
- CARIBBEAN
CARI
- CIEL
CIEL
- CLOUD
CLOD
- CORAL
CRAL
- GALAXY
GLXY
- GRAPE
GRAP
- HUNTER
HNTR
- LILAC
LILA
- NAVY
NAVY
- OLIVE
OLIV
- PEWTER
PWTR
- ROYAL
ROYL
- TAFFY PINK
TFPK
- TEAL
TEAL
- WINE
WINE

“
 If I could give
 10 stars, I would. These
 pants are super soft,
 comfy, and flattering!
 They are a perfect fit in
 all the right places.
 SKY



STYLE 2432
1 POCKET TOP
 • V-neck
 • One patch pocket
 • Bungee loop
 • Split sleeve detail
 R: XS-5X (27")
 Shown in Caribbean

STYLE 2711
JOGGER
 • Adjustable front waist ties
 • Two cargo pockets
 • Jersey knit waistband
 & ankle cuffs
 R: XS-3X (28 1/2")
 P: XS-XL (26 1/2")
 T: XS-XL (31")
 Shown in Caribbean

★ NEW COLOR | AVAILABLE 08/2023



STYLE 7739

**YOGA 2 CARGO
POCKET PANT**

- Jacquard elastic and rib knit waistband
- Internal waist ties
- Two cargo, two back patch pockets
- Extra accessory pocket
- Straight leg with side vents

R: XS-5X (31")
 P: XS-2X (29")
 T: XS-XL (33 1/2")
 Shown in Ice Pink



STYLE 7459

V-NECK SHIRTTAIL TOP

- Overlapping rib knit side panels
 - Accessory loop
 - Extra accessory pocket and pen slot
 - Two large patch pockets
 - Inside contrast neckband
- R: XS-5X (27")
 Shown in Ice Pink



TOUCH FABRICS:

Performance Touch Stretch | 76% polyester | 21% rayon | 3% spandex
 Heathered | 72% polyester | 22% rayon | 6% spandex

◆ NEW COLOR | AVAILABLE 09/2023



- BLACK
BLK
- NAVY
NAVY
- PEWTER
PWTR
- ROYAL
ROYL
- WHITE
WHIT

STYLE 7660
 RAGLAN
 WARM UP
 • Lightweight design
 • Full zip front
 • 2 welt pockets
 • 2-onseam pockets
 R: XS-3X (26")
 Shown in Royal



- BLACK
BLK
- CARIBBEAN
CARI
- CIEL
CIEL
- EGGPLANT
EGPL
- GALAXY
GLXY
- ICE PINK
IPNK
- LILAC
LILA
- NAVY
NAVY
- OLIVE
OLIV
- PEWTER
PWTR
- RED
REDD
- ROYAL
ROYL
- SLATE
SLAT
- TEAL BLUE
TEAL
- WINE
WINE



STYLE 7448
 CHEST POCKET TOP
 • V-neck
 • Chest patch pocket
 • Rib knit shoulder yokes
 • Bungee loop
 • Back yoke
 R: XS-3X (27 1/2")
 Shown in Royal

“
*I love this top!
 It's AWESOME material,
 super soft and breathable.
 Totally moves with you.
 VERY well made.
 My new favorite.*
 LORRAINE

★ NEW COLOR | AVAILABLE 08/2023



STYLE 7468

V-NECK KNIT
BACK TOP

- V-Neck
- Three patch pockets
- One zipper pocket
- Comfortable rib knit back
- Shoulder seam detail

R: XS-5X (27")

Shown in Navy and Royal

*Not available in Caribbean, Periwinkle and Red

STYLE 7710

JOGGER YOGA PANT

- Adjustable front waist ties
- Single cargo pocket
- Accessory loop
- Two back patch pockets
- Rib knit waistband and ankle cuffs

R: XS-3X (28 1/2")

P: XS-XL (26 1/2")

T: XS-XL (31")

Shown in Navy and Royal on pg 12

Shown in Caribbean, Lilac and Teal on pg 13



◆ NEW COLOR | AVAILABLE 08/2023



THE TOUCH COLLECTION • THE TOUCH COLLECTION

BLACK

BLK

CIEL

CIEL

LILAC

LILA

NAVY

NAVY

OLIVE

OLIV

PEWTER

PWTR

ROYAL

ROYL

SLATE

SLAT

TEAL

TEAL

WINE

WINE



STYLE 7425
RAGLAN SLEEVE TOP
• V-neck in front
• Raglan sleeve
• Rib knit pocket
• Two layer pockets
R: XS-3X (27 1/2")
Shown in Navy

STYLE 7725
YOGA WAIST PANT
• Jersey knit waistband
• Two side pockets
• Two cargo pockets
• Straight leg with side vents
R: XS-3X (30 1/2")
P: XS-2X (28 1/2")
T: XS-XL (33")
Shown in Navy

NEW STYLE | AVAILABLE 08/2023

Touch | 15

NEW
Touch
Jogger
Not on Amazon
(yeah, you needed that)



NEW STYLE 7705
DOUBLE CARGO JOGGER
• High waist jersey knit waistband
• Two side pockets
• Double cargo pockets
• Phone pocket
• Jersey cuff
R: XS-3X (30 1/2")
P: XS-XL (28 1/2")
T: XS-XL (33")
Shown in Teal



- BLACK
BLK
- CARIBBEAN
CARI
- CIEL
CIEL
- CINNAMON
CINM
- GELATO
GELO
- NAVY
NAVY
- OLIVE
OLIV
- PEWTER
PWTR
- ROYAL
ROYL
- TAFFY PINK
TFPK
- WINE
WINE



PEACHES FABRIC:

Performance Stretch | Moisture Wicking | 92% polyester | 8% spandex



STYLE 8470

RAGLAN TOP

- V-neck
- Two large pockets
- Rib-knit detail
- Side snap embellishment

R: XS-3X (26 1/2")

Shown in Olive

Shown on page 16

STYLE 8721

SEAMED JOGGER

- Adjustable front waist ties
- Two cargo pockets
- Jersey waistband and ankle cuffs

R: XS-3X (28 1/2")

P: XS-XL (26 1/2")

T: XS-XL (31")

Shown in Olive

“

I have been desperately searching for a good pair of joggers. After trying the expensive, popular scrubs everyone wears and finding their sizes were weird, I came across Med Couture. These are the scrub pants of my dreams. Absolutely in love.

CAITLIN

✦ NEW COLOR | AVAILABLE 08/2023



- BLACK
BLK
- CARIBBEAN
CARI
- CIEL
CIEL
- CINNAMON
CINM
- GELATO
GEL
- NAVY
NAVY
- OLIVE
OLIV
- PEWTER
PWTR
- ROYAL
ROYL
- TAFFY PINK
TFPK
- WINE
WINE

STYLE 8482
 1 POCKET TOP
 • Squared v-neck in front
 • Shirttail hem
 • Chest patch pocket
 • Chest zipper pocket
 R: XS-3X (27 1/2")
 Shown in Cinnamon

◆ NEW COLOR | AVAILABLE 08/2023



STYLE 8674
 WARM-UP JACKET
 • Ribbed collar
 • Zipper pocket on sleeve
 • Two front zipper pockets
 • Slight forward shoulder
 • Rib sleeve cuff
 R: XS-3X (25")
 Shown in Navy

- BLACK
BLAC
- CIEL
CIEL
- NAVY
NAVY
- PEWTER
PWTR
- ROYAL
ROYL
- TAFFY PINK
TFPK
- WINE
WINE

THE PEACHES COLLECTION • THE PEACHES COLLECTION • THE PEACHES COLLECTION



STYLE 8434

DOUBLE V-NECK TOP

- V-neck in front and back
- Geometric seam details
- Two angled welt pockets

R: XS-3X (27 1/4")

Shown in Black



“
 Best pair of scrub pants hands down!! They are comfortable, lightweight, and stretchy, I will be ordering in more colors!!
 Do not hesitate to buy these,
THEY ARE WORTH IT!

MARLEE



STYLE 8733

YOGA WAIST PANT

- Outer waist ties
- Waist zip pocket
- Two cargo pockets
- Straight leg with side vents

R: XS-3X (30 1/2")

P: XS-XL (28 1/2")

T: XS-XL (33")

Shown in Navy

- BLACK
BLK
- CARIBBEAN
CARI
- CIEL
CIEL
- CINNAMON
CINM
- GELATO
GELO
- NAVY
NAVY
- PEWTER
PWTR
- ROYAL
ROYL
- TAFFY PINK
TFPK
- WINE
WINE



BLACK
BLK

NAVY
NAVY

PEWTER
PWTR

ROYAL
ROYL

TAFFY PINK
TFPK

WHITE
WHIT



STYLE 8499
PERFORMANCE
KNIT TEE

- 90% polyester, 10% spandex
 - Cover stitch scoop neckline
 - Slimming side seam panels
 - Back yoke for added fit
- R: XS-3X (26")
Shown in Navy



BLACK
BLK

NEW NAVY
NNVY

PEWTER
PWTR

ROYAL
ROYL

STYLE 8684
PERFORMANCE
FLEECE JACKET

- 100% polyester
- Hair tie on the zipper pull
- Two front welt pockets

- Two hidden inside pockets
 - Back logo reflector
- R: XS-3X (26")
Shown in New Navy and Royal

“
So the jacket is FABULOUS! It's warmer than regular scrub jackets, but not too warm like you would think with a fleece jacket. The fleece is very thin but super comfortable!
HALEY



- BLACK
BLK
- CIEL
CIEL
- NAVY
NAVY
- PEWTER
PWTR
- ROYAL
ROYL



STYLE 8729
MATERNITY JOGGER

- Comfortable knit waist panel
- Two cargo pockets
- Two back pockets
- Jersey knit ankle cuffs

R: XS-3X (28 1/2")
P: XS-XL (26 1/2")
Shown in Ciel



STYLE 8459
MATERNITY TOP

- V-neck
- Comfortable side knit panels
- Adjustable bungee with toggle
- Two large patch pockets

R: XS-3X (27 1/2")
Shown in Royal

STYLE 8727
MATERNITY PANT

- Comfortable knit waist panel
- Single cargo pocket
- Extra welt accessory pocket
- Single back welt pocket
- Boot cut leg with side vents

R: XS-3X (30 1/2")
P: XS-XL (28 1/2")
Shown in Royal and Ciel





OWL LEAF (OWLL)
XS-3X



SNOWFLAKE SNOWMAN (SFSM)
XS-3X



WATERCOLOR FLOWER (WCFL)
XS-3X



NEWSPAPER DAISY (NPDA)
XS-3X



ORNAMENT PARTY (ORPT)
XS-3X



SNOWFLAKE SKATTER (SFSR)
XS-3X



SKULL HALLOWEEN (SUHW)
XS-3X



STYLE 8564
V-NECK TOP

- Seasonal prints
- Perfect for layers
- Super soft fabric
- XS-3X (26")

PASTEL BUTTERFLY (PSBF)
XS-3X

◆ PRINTS AVAILABLE 08/2023

PRINTS FABRIC:
Two-Way Performance Stretch | 92% polyester | 8% spandex

ROTH WEAR

Your Go-to Men's Scrubs

TOUCH Collection



STYLE 7478
CADENCE
 1 POCKET TOP
 • Tuck in or leave out
 • Secure chest pocket
 R: XS-3X (30")
 Shown in Hunter
 Show in Pewter on pg 29

STYLE 7777
BOWEN JOGGER
 • Super comfortable waistband
 • Outer Waist Ties
 • Cargo pocket
 • Jersey knit ankle cuffs
 R: XS-3X (29 1/2")
 S: XS-2X (27")
 T: XS-2X (31 1/2")
 Shown in Hunter
 Show in Pewter on pg 29



◆ NEW COLOR | AVAILABLE 08/2023

PERFORMANCE TOUCH STRETCH FABRIC
76% polyester | 21% rayon | 3% spandex

HEATHERED FABRIC
72% polyester | 22% rayon | 6% spandex



STYLE 7678
ORION WARMUP
 • Lightweight design
 • Full zip front
 • Long sleeves
 • 2 pockets
 • Pen holder on left sleeve
 R: XS-3X (30 3/4")
 Shown in Navy

- BLACK
BLK
- NAVY
NAVY
- PEWTER
PWTR



STYLE 7477
WESTCOTT
3 POCKET TOP
 • 2 patch pockets
 • 1 chest welt pocket
 R: XS-3X (30")
 Shown in Caribbean

STYLE 7779
HUTTON STRAIGHT
LEG PANT
 • Super comfortable waistband
 • Outer waist ties
 • 2 side pockets
 • 2 cargo pockets + phone storage
 • Single back pocket
 R: XS-3X (31")
 S: XS-3X (28 1/2")
 T: XS-3X (33")
 *NO SLATE IN TALL
 Shown in Caribbean

- BLACK
BLK
- CARIBBEAN
CARI
- CIEL
CIEL
- GALAXY
GLXY
- HUNTER
HNTR
- NAVY
NAVY
- PEWTER
PWTR
- ROYAL
ROYL
- SLATE
SLAT
- WINE
WINE

The INSIGHT FOR MEN Collection

NEW STYLE 2765

JOGGER

- Jersey knit waistband
 - Outer waist ties
 - Single layer cargo pockets
 - Jersey knit ankle cuffs
 - Single back pocket
- R: XS-5X (29 1/2")
 S: XS-3X (27")
 T: XS-3X (31 1/2")
 Shown in Ceil



NEW STYLE 2486

3 POCKET TOP

- Single chest pocket
 - Two single patch pocket
 - Shoulder yoke
- XS-5X (30")
 Shown in Ciel

Insight For Men

Not on Amazon
 MAP=Key + \$5
 No MAP Holidays

INSIGHT FABRIC :
 Super Soft + Stretch + Moisture Wicking + 100% Polyester



NEW STYLE 2478
 1 POCKET TOP
 • Tuck in or leave out
 • Secure chest pocket
 • Slight forward shoulder
 R: XS-5X (30")
 Shown in Wine



- BLACK
BLK
- CIEL
CIEL
- NAVY
NAVY
- PEWTER
PWTR
- ROYAL
ROYL
- WINE
WINE

STYLE 2772
 STRAIGHT LEG PANT
 • Jersey knit waistband
 • Metal grommets
 • 2 side pockets
 • 2 cargo pockets & phone storage
 • Single back pocket
 R: XS-5X (31")
 S: XS-3X (28 1/2")
 T: XS-3X (33")
 Shown in Wine





INTRODUCING *olive* FOR PEACHES

Peaches

8482
1 POCKET TOP

8721
SEAMED JOGGER

8470
RAGLAN TOP

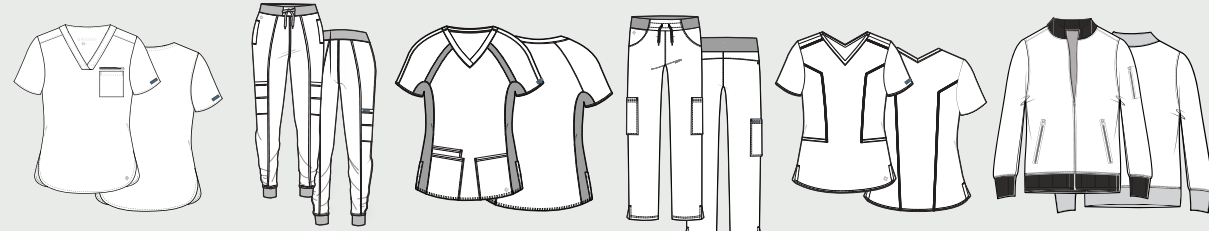
8733
YOGA WAIST PANT

8434
DOUBLE V-NECK TOP

8674
WARM-UP JACKET

FABRIC:
Cool & invigorating
Ultra-soft
Maximum stretch
Moisture-wicking
SPF 50

92% Polyester
8% Spandex



| | | | | | |
|--------------------|--|--------------------|--|--------------------|--------------------|
| R: XS-3X 27 1/2" | R: XS-3X 28 1/2" P: XS-XL 26 1/2" T: XS-XL 31" | R: XS-3X 26 1/2" | R: XS-3X 30 1/2" P: XS-XL 28 1/2" T: XS-XL 33" | R: XS-3X (27 1/4") | R: XS-3X (25 1/2") |
|--------------------|--|--------------------|--|--------------------|--------------------|

| | | | | | |
|-------------------|----------|----------|----------|-----|-----|
| BLACK BLK | | | | | |
| CARIBBEAN CARI | | | | | N/A |
| CIEL CIEL | | | | | |
| CINNAMON CINM | | | | N/A | N/A |
| GELATO GELO | | | | | N/A |
| NAVY NAVY | | | | | |
| OLIVE OLIV | NEW FA23 | NEW FA23 | NEW FA23 | N/A | N/A |
| PEWTER PWTR | | | | | |
| ROYAL ROYL | | | | | |
| TAFFY PINK TFPK | | | | | |
| WINE WINE | | | | | |

Touch

7459
V-NECK SHIRTTAIL TOP

7710
JOGGER YOGA PANT

7468
V-NECK KNIT BACK TOP

7739
YOGA 2 PKT PANT

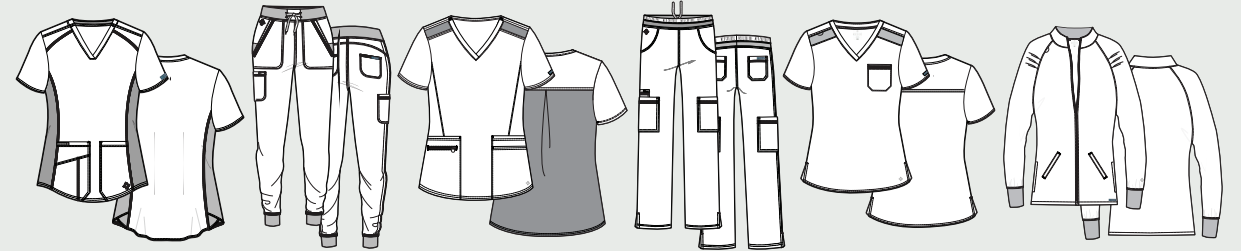
7448
V-NECK TUCK IN TOP

7660
WARM UP

FABRICS:
Cool & comfortable
Soft as cotton

76% Polyester
21% Rayon
3% Spandex

Heathered
72% Polyester
22% Rayon
6% Spandex



| | | | | | |
|----------------|--|----------------|--|--------------------|----------------|
| R: XS-5X 27" | R: XS-3X 28 1/2" P: XS-XL 26 1/2" T: XS-XL 31" | R: XS-5X 27" | R: XS-5X 31" P: XS-2X 29" T: XS-XL 33 1/2" | R: XS-3X 27 1/2" | R: XS-3X 26" |
|----------------|--|----------------|--|--------------------|----------------|

| | | | | | |
|-------------------|----------|----------|-----|----------|-----|
| BLACK BLK | | | | | |
| CARIBBEAN CARI | | | N/A | | N/A |
| CIEL CIEL | | | | | N/A |
| CLOUD CLOD | | | | N/A | N/A |
| CORAL CRAL | | | | N/A | N/A |
| EGGPLANT EGPL | | | | | N/A |
| GALAXY GLXY | | | | | N/A |
| HUNTER HNTR | | | | N/A | N/A |
| ICE PINK IPNK | NEW FA23 | NEW FA23 | N/A | NEW FA23 | N/A |
| LILAC LILA | | | | | N/A |
| NAVY NAVY | | | | | |
| OLIVE OLIV | | | | | N/A |
| PINK PUNCH PKPH | | | | N/A | N/A |
| PERIWINKLE PWNK | | | N/A | | N/A |
| RED REDD | | | N/A | | N/A |
| PEWTER PWTR | | | | | |
| ROYAL ROYL | | | | | |
| SLATE SLAT | | | | | N/A |
| TEAL BLUE TEAL | | | | | N/A |
| WHITE WHIT | | N/A | N/A | N/A | |
| WINE WINE | | | | | N/A |

NOT ON AMAZON

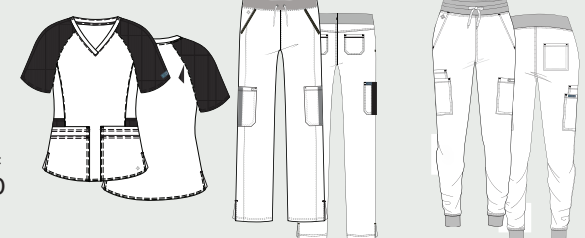
Touch

7425
RAGLAN SLEEVE TOP

7725
YOGA PANT

NEW STYLE
7705 DOUBLE
CARGO JOGGER

(Same Touch fabric attributes as above)



| | | |
|-----------------|--|--|
| XS-3X (27 1/2") | R: XS-3X 30 1/2" P: XS-2X 28 1/2" T: XS-XL 33" | R: XS-3X 30 1/2" P: XS-XL 26 1/2" T: XS-XL 31" |
|-----------------|--|--|

| | | |
|------------------|--|--|
| BLACK BLAC | | |
| CEIL CEIL | | |
| LILAC LILA | | |
| NAVY NAVY | | |
| OLIVE OLIV | | |
| PEWTER PWTR | | |
| ROYAL ROYL | | |
| SLATE SLAT | | |
| TEAL BLUE TEAL | | |
| WINE WINE | | |

NOT ON AMAZON

| INSIGHT | 2411 3 POCKET TOP | 2702 YOGA WAIST PANT | 2468 SIDE POCKET TOP | 2711 INSIGHT JOGGER | 2432 ONE POCKET TOP | 2660 WARM UP |
|---|----------------------|---|-------------------------|--|------------------------|-----------------|
| FABRIC: Breathable Super soft Moisture-wicking | | | | | | |
| 100% Polyester | R: XXS-5X 27" | R: XXS-5X 30 1/2" P: XS-2X 28 1/2" T: XS-XL 33" | R: XS-3X 27" | R: XS-3X 27" P: XS-XL 26 1/2" T: XS-XL 31" | R: XS-5X 27" | XS-5X 26" |
| BLACK BLK | | | | | | |
| CARIBBEAN CARI | NEW FA23 | NEW FA23 | NEW FA23 | NEW FA23 | NEW FA23 | NEW FA23 |
| CIEL CIEL | | | | | | |
| CLOUD CLOD | | | | | | N/A |
| CORAL CRAL | | | | | | N/A |
| GALAXY GLXY | | | | | | |
| GRAPE GRAP | | | | | | |
| HUNTER HNTR | | | | | | |
| LILAC LILA | | | | | | N/A |
| NAVY NAVY | | | | | | |
| OLIVE OLIV | | | | | | |
| PEWTER PWTR | | | | | | |
| ROYAL ROYL | | | | | | |
| TAFFY PINK TFPK | | | | | | N/A |
| TEAL BLUE TEAL | | | | | | |
| WINE WINE | | | | | | |

| Layers | 8499 PERFORMANCE KNIT TEE | 8684 FLEECE WARM UP |
|-------------------|--|----------------------------------|
| | | |
| | R: XS-3X 26" 90% Polyester 10% Spandex | R: XS-3X 26" 100% Polyester |
| BLACK BLK | | |
| NAVY NAVY | | |
| PEWTER PWTR | | |
| ROYAL ROYL | | |
| TAFFY PINK TFPK | | N/A |
| WHITE WHIT | | N/A |

| Maternity | 8729 MATERNITY JOGGER | 8459 MATERNITY TOP | 8727 MATERNITY PANT |
|--|--|-----------------------|--|
| FABRIC: Performance Activate Stretch | | | |
| 95% Polyester 5% Spandex | R: XS-3X 28 1/2" P: XS-XL 26 1/2" | R: XS-3X 27 1/2" | R: XS-3X 30 1/2" P: XS-XL 28 1/2" |
| BLACK BLK | | | |
| CIEL CIEL | | | |
| NAVY NAVY | | | |
| PEWTER PWTR | | | |
| ROYAL ROYL | | | |



FALL FOR *cinnamon* FOR PEACHES

| RothWear Touch for Men | 7478 ONE POCKET TOP | 7777 JOGGER | 7477 THREE POCKET TOP | 7779 STRAIGHT LEG | 7678 WARM UP |
|---|--------------------------------|--|----------------------------------|---|-------------------------|
| <p>FABRICS: Cool & comfortable Soft as cotton</p> <p>76% Polyester 21% Rayon 3% Spandex</p> <p>Heathered 72% Polyester 22% Rayon 6% Spandex</p> | | | | | |
| | R: XS-3X 30" | R: XS-3X 29 1/2" S: XS-2X 27" T: XS-2X 31 1/2" | R: XS-3X 30" | R: XS-3X 31" S: XS-3X 28 1/2" T: XS-3X 33"* | R: XS-3X 30 3/4" |
| BLACK BLK | | | | | |
| CARIBBEAN CARI | NEW FA23 | NEW FA23 | NEW FA23 | NEW FA23 | N/A |
| CIEL CIEL | | | | | N/A |
| GALAXY GLXY | | | | | N/A |
| HUNTER HNTR | | | | | N/A |
| NAVY NAVY | | | | | |
| PEWTER PWTR | | | | | |
| ROYAL ROYL | | | | | N/A |
| SLATE SLAT | | | | *NO SLATE IN TALL | N/A |
| WINE WINE | | | | | N/A |

| NOT ON AMAZON | | | | |
|---|--------------------------------|--|----------------------------------|--|
| INSIGHT FOR MEN | 2478 ONE POCKET TOP | 2765 JOGGER | 2486 THREE POCKET TOP | 2772 STRAIGHT LEG |
| <p>FABRIC: Breathable Super soft Moisture-wicking</p> <p>100% Polyester</p> | | | | |
| | R: XS-5X 30" | R: XS-5X 29 1/2" S: XS-3X 27" T: XS-3X 31 1/2" | R: XS-5X 30" | R: XS-5X 31" S: XS-3X 28 1/2" T: XS-3X 33" |
| BLACK BLK | | | | |
| CIEL CIEL | | | | |
| NAVY NAVY | | | | |
| PEWTER PWTR | | | | |
| ROYAL ROYL | | | | |
| WINE WINE | | | | |

Size Charts

MED COUTURE - MISSY FIT

| SIZES | XXS | XS | S | M | L | XL | 2X | 3X | 4X | 5X |
|--------------|-----|-------|-------|-------|-------|-------|-------|-------|-------|-------|
| | 0 | 2-4 | 6-8 | 10-12 | 14-16 | 18-20 | 22-24 | 26-28 | 30-32 | 34-36 |
| BUST | 32 | 33-34 | 35-36 | 37-39 | 40-43 | 44-47 | 48-51 | 52-55 | 56-59 | 60-63 |
| WAIST | 24 | 25-26 | 27-28 | 29-31 | 32-35 | 36-39 | 40-43 | 44-47 | 48-51 | 52-55 |
| HIP | 34 | 35-36 | 37-38 | 39-41 | 42-45 | 46-49 | 50-53 | 54-57 | 58-62 | 63-67 |

MED COUTURE - MATERNITY

| SIZES | | XS | S | M | L | XL | 2X | 3X |
|--------------|---------------|-------|-------|-------|-------|-------|-------|-------|
| BUST | | 34-35 | 36-37 | 38-40 | 41-44 | 45-48 | 49-52 | 53-55 |
| WAIST | ELASTIC WAIST | | | | | | | |
| HIP | | 36-37 | 38-39 | 40-42 | 43-46 | 47-50 | 51-54 | 55-58 |

WOMEN'S HEIGHT

Regular: 5'4 1/2" to 5'7"
Petite: 5'4" and under
Tall: 5'9" to 5'11"
(approximate)

MISSES INSEAM LENGTHS

Regular: 30-31"
Petite: 28-29"
Tall: 32 1/2-33 1/2"
(approximate)

**ROTH
WEAR**

| SIZES | XS | S | M | L | XL | 2X | 3X | 4X | 5X |
|--------------|-------|-------|-------|-------|-------|-------|-------|-------|-------|
| | 32-34 | 35-37 | 38-40 | 42-44 | 46-48 | 50-52 | 54-56 | 58-60 | 62-64 |
| CHEST | 32-34 | 35-37 | 38-40 | 42-44 | 46-48 | 50-52 | 54-56 | 58-60 | 62-64 |
| WAIST | 25-27 | 28-30 | 31-33 | 35-37 | 39-41 | 43-45 | 47-49 | 51-53 | 55-57 |
| HIP | 32-34 | 35-37 | 38-40 | 42-44 | 46-48 | 50-52 | 54-56 | 58-60 | 62-64 |

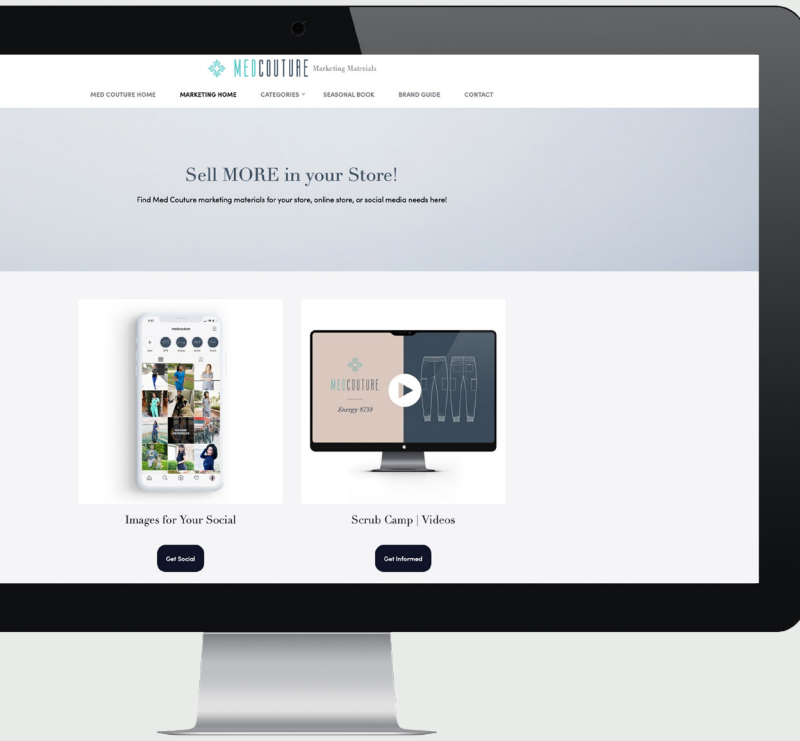
MEN'S INSEAM LENGTHS

Regular: 31"
Tall: 33"
Short: 28 1/2"
(approximate)

WHEN YOU BRAND YOUR COMPETITION

YOURSELF PROPERLY, BECOMES IRRELEVANT.

We make marketing easy by providing excellent product resources.



SELL ONLINE

We provide images of complete collections photographed on professional models. Also, we offer product descriptions and sketches.

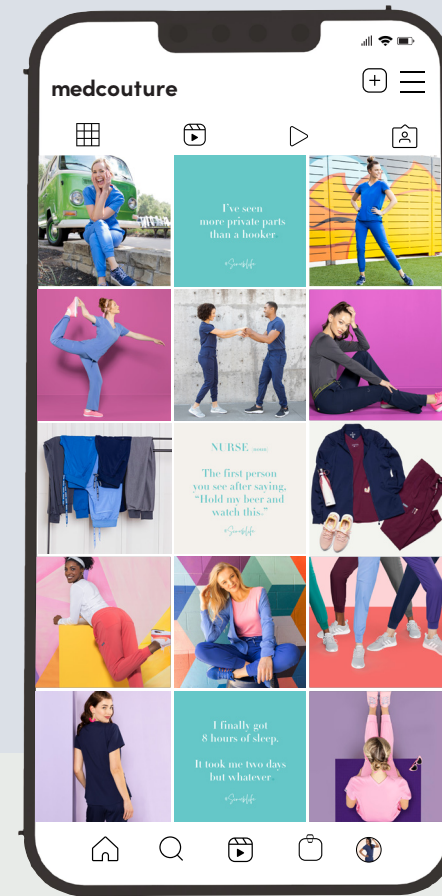
Link directly to images from our online image bank, download them and upload them to your website.

Images are updated seasonally!



FACE TO FACE

Show them our beautifully crafted brochures. We custom produce brand or line-specific collateral and signage. We can even include your store logo!



SOCIAL MEDIA

Med Couture has a robust promoter program. Many retailers are unaware they can use the images promoters provide too! These are assessable in a shared folder online that merchants can pull from, upload, and tag @medcouture.

BRAND TOOLKIT

You know your business. You know your customers. And you know there's something special about Med Couture scrubwear. We're here to help you tell the #Scrublife story—so you can build deeper connections & expand your opportunities.



See medcouture.com/gear for all your marketing needs!



INTRODUCING *ice pink* FOR TOUCH

 [company/Med-Couture](#)

 [@MedCouture](#) | [@RothWear](#)

 [/MedCoutureInc](#) | [/RothWear](#)

 [MedCouture.com](#) | [RothWear.com](#)